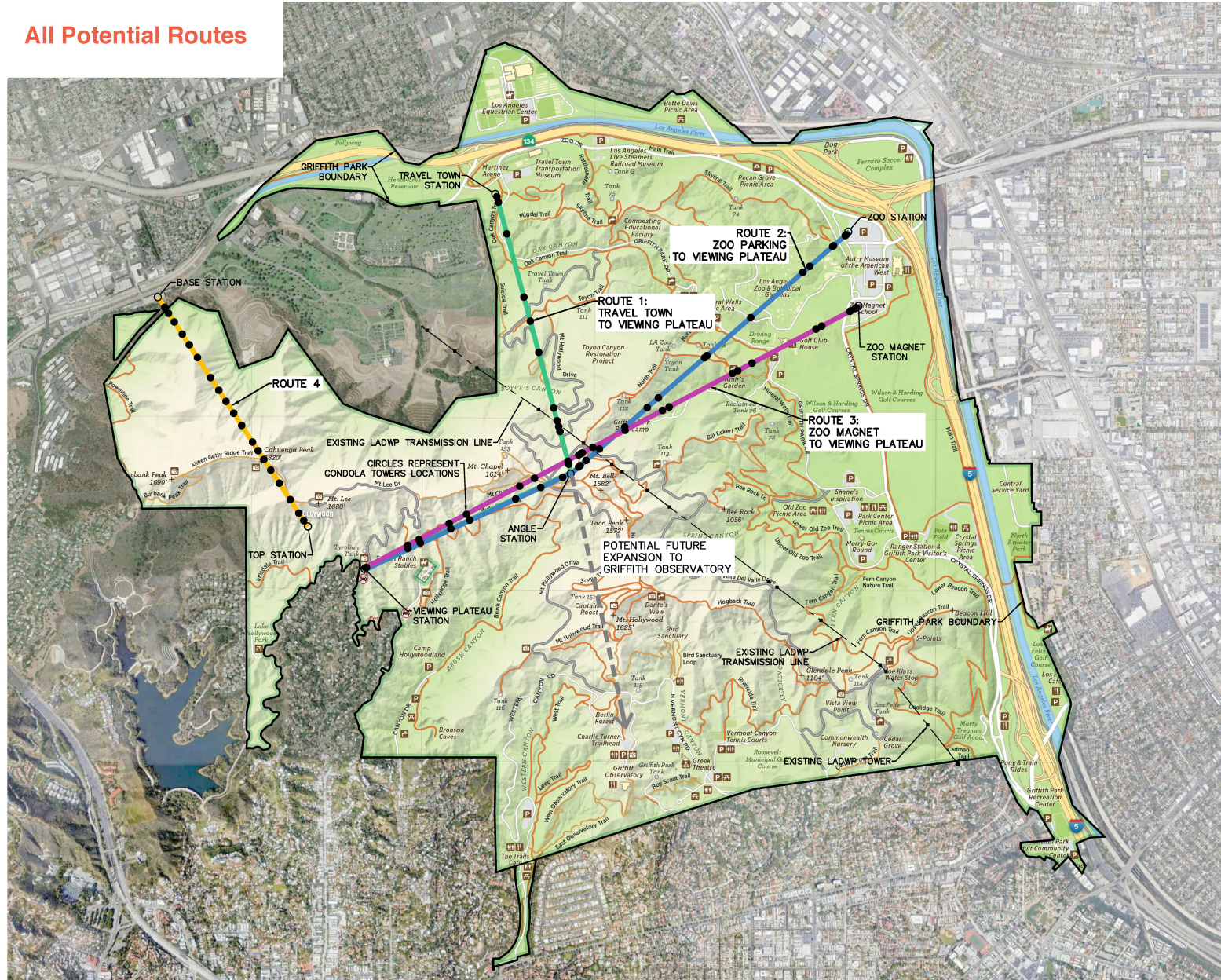


# All Potential Routes

## GRIFFITH PARK AERIAL TRANSIT STUDY



### All Potential Routes



### Route 1: Travel Town

#### Benefits:

- Freeway Off-Ramp
- Best Terrain
- Easiest Power Line Crossing

#### Issues:

- Ridgeline Angle Station
- Limited Area for Parkin
- Overfly Royce's Canyon
- Potential Loss of Martinez Area

#### Info:

- No. of Towers: 21
- Trip Time: 12 Minutes

### Route 2: L.A. Zoo Parking

#### Benefits:

- Freeway Off-Ramp
- Under-Utilized Parking Area

#### Issues:

- Ridgeline Angle Station
- Costly Powerline Crossing
- Overfly Zoo
- Zoo Vision Plan Conflicts

#### Info:

- No. of Towers: 24
- Trip Time: 13 Minutes

### Route 3: L.A. Zoo Magnet

#### Benefits:

- Traffic Congestion Reduction
- Easy Freeway Access
- No Angle Station at Ridgeline

#### Issues:

- Costly Power Line Crossing
- Will Fly Over Golf Course
- Zoo Vision Plan Considerations
- Impact to Zoo Magnet Center

#### Info:

- No. of Towers: 24
- Trip Time: 12 Minutes

### Route 4: Warner Brothers

#### Benefits:

- Shortest Ride / Alignment Length
- Additional Visitor Amenities
- Base Station Located on WB Property
- Opportunity for Partnership with WB

#### Issues:

- Least Traffic Congestion Reduction
- Emergency Access and Egress from Destination
- Constructability and Impacts of Destination
- Possible Higher Ticket Cost
- Visual Impact to the Hollywood Sign from Surrounding Areas
- Needs Additional Study

#### Info:

- No. of Towers: 19
- Trip Time: 6 Minutes